

# IES-1050A/1080A

## ➤ Industrial Slim Type 5/8-port unmanaged Ethernet switch

### Features

- IES-1050A provides 5 x 10/100Base-T(X) ports
- IES-1080A provides 8 x 10/100Base-T(X) ports
- Supports auto-negotiation and auto-MDI/MDI-X
- Supports store-and-forward transmission
- Supports flow control
- Warning system by relay output
- Rigid IP-30 housing design
- DIN-Rail and wall mounting enabled



### Introduction

IES-1050A/1080A is unmanaged Ethernet switches with 5 or 8 x 10/100Base-T(X) ports. IES-1050A/1080A support redundant power inputs, configurable relay output alarm and rigid IP-30 housing. In addition, the wide operating temperature range from -40 to 70°C can satisfy most of operating environment.

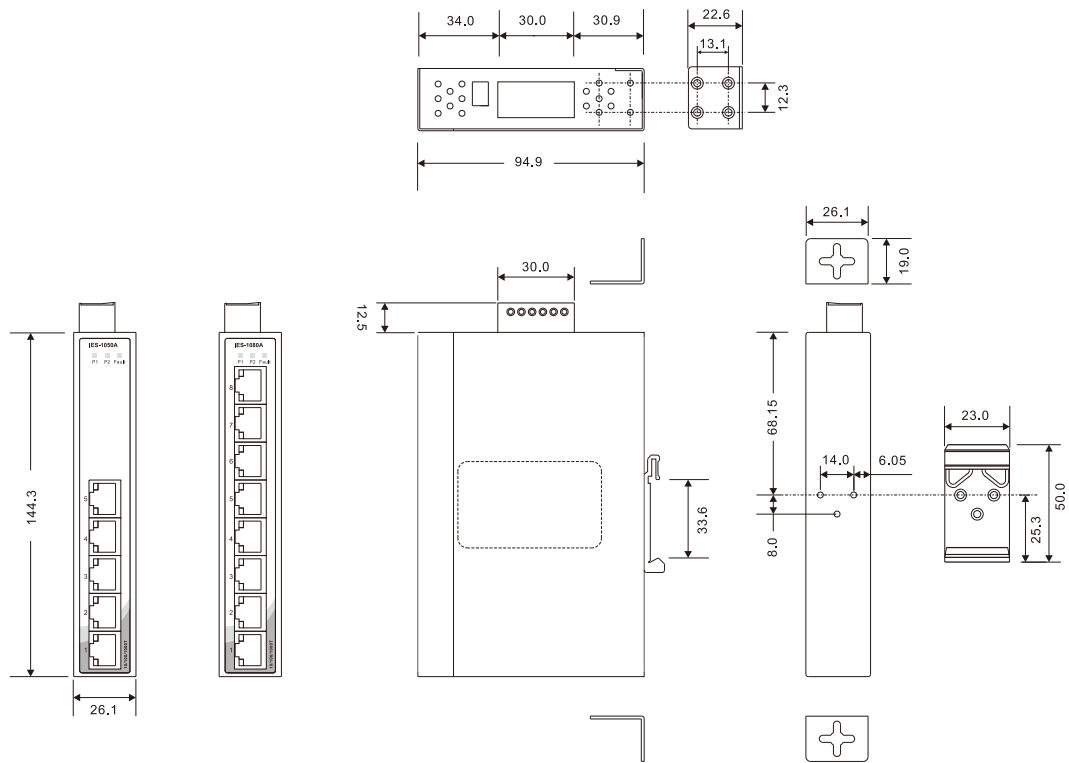
### Practical Operation

IES-1050A/1080A can be used in connecting several Ethernet devices like Ethernet I/O, IP-Camera or other Ethernet switches. In addition, there are two different power inputs at terminal block to avoid interruption caused by power down. When the primary DC power input fails, the backup power input will take over immediately to guarantee a non-stop operation.



Connections of Ethernet devices

## Dimensions



(Unit=mm)

## Specifications

ORing Switch Model	IES-1080A	IES-1050A
<b>Physical Ports</b>		
10/100Base-T(X) Ports in RJ45 Auto MDI/MDIX	8	5
<b>Technology</b>		
Ethernet Standards	IEEE 802.3 for 10Base-T IEEE 802.3u for 100Base-TX IEEE 802.3x for Flow control	
MAC Table	2048 MAC addresses	
Processing	Store-and-Forward	
<b>LED Indicators</b>		
Power Indicator	Green : Power LED x 2	
Fault Indicator	Amber : Indicates PWR1 or PWR2 failure occurred	
10/100Base-T(X) RJ45 Port Indicator	Green for port Link/Act. Amber for Duplex/Collision	
<b>Fault Contact</b>		
Relay	Relay output to carry capacity of 1A at 24VDC	
<b>Power</b>		
Redundant Input Power	Dual DC inputs: 12~48 VDC on 6-pin terminal block	
Power Consumption (Typ.)	4 Watts	3.5 Watts
Overload Current Protection	Present	
Reverse Polarity Protection	Present	

Physical Characteristics	
Enclosure	IP-30
Dimensions (W x D x H)	26.1(W) x 94.9(D) x 144.3(H) mm (1.03 x 3.74 x 5.68 inch.)
Weight (g)	391 g
Environmental	
Storage Temperature	-40 to 85°C (-40 to 185°F)
Operating Temperature	-40 to 70°C (-40 to 158°F)
Operating Humidity	5% to 95% Non-condensing
Regulatory Approvals	
EMI	FCC Part 15, CISPR (EN55022) class A
EMS	EN61000-4-2 (ESD), EN61000-4-3 (RS), EN61000-4-4 (EFT), EN61000-4-5 (Surge), EN61000-4-6 (CS), EN61000-4-8, EN61000-4-11
Shock	IEC60068-2-27
Free Fall	IEC60068-2-32
Vibration	IEC60068-2-6
Safety	EN60950-1
MTBF (Hours) (MIL-HDBK-217F2, GB, GC, 25°C)	707,879
Warranty	5 years

## Ordering Information

IES-1 **AA** **B** **A**

Code Definition	10/100Base-T(X) Port Number	Additional Port Number
<b>Option</b>	- <b>08</b> : 8 ports - <b>05</b> : 5 ports	- <b>0</b> : 0 port

Available Model	Model Name	Description
	IES-1080A	Industrial 8-port slim type unmanaged Ethernet switch with 8x10/100Base-T(X)
	IES-1050A	Industrial 5-port slim type unmanaged Ethernet switch with 5x10/100Base-T(X)
<b>Packing List</b>		<b>Optional Accessories (Can be purchased separately)</b>
<ul style="list-style-type: none"> <li>IES-1050A / 1080A</li> <li>DIN-Rail Kit</li> <li>Wall-mount Kit</li> <li>Quick Installation Guide</li> </ul>		<ul style="list-style-type: none"> <li>DR-45 series, 45W DIN-Rail power supply</li> <li>DR-75 series, 75W DIN-Rail power supply</li> <li>DR-120 series, 120W DIN-Rail power supply</li> </ul>